



I-12 To Bush Corridor Study
State Project No. 700-52-0124 (TIMED)
AERIAL PHOTOGRAPHY WITH CONCEPTUAL
ALTERNATIVES



The following quad maps depict the top five alternatives, in addition to the widening of LA 21 and LA 41, on an aerial base photography:

Waldheim
Bush
Industrial
Covington

St. Tammany
Hickory
Slidell

Please note:

- The top three alternatives recommended for further evaluation are Alternatives B3, O3 and P3. The Preferred Alternative will be determined during the environmental and conceptual engineering process under Phase III.
- These maps are at a scale of 1 inch = 2,000 feet.
- The line width depicting each alternative is approximately the width of the proposed right-of-way.
- These maps are a graphical representation of conceptual alignments. The maps and the referenced alternatives should NOT be used for any specific property transaction purposes.

Questions regarding these maps may be directed to:

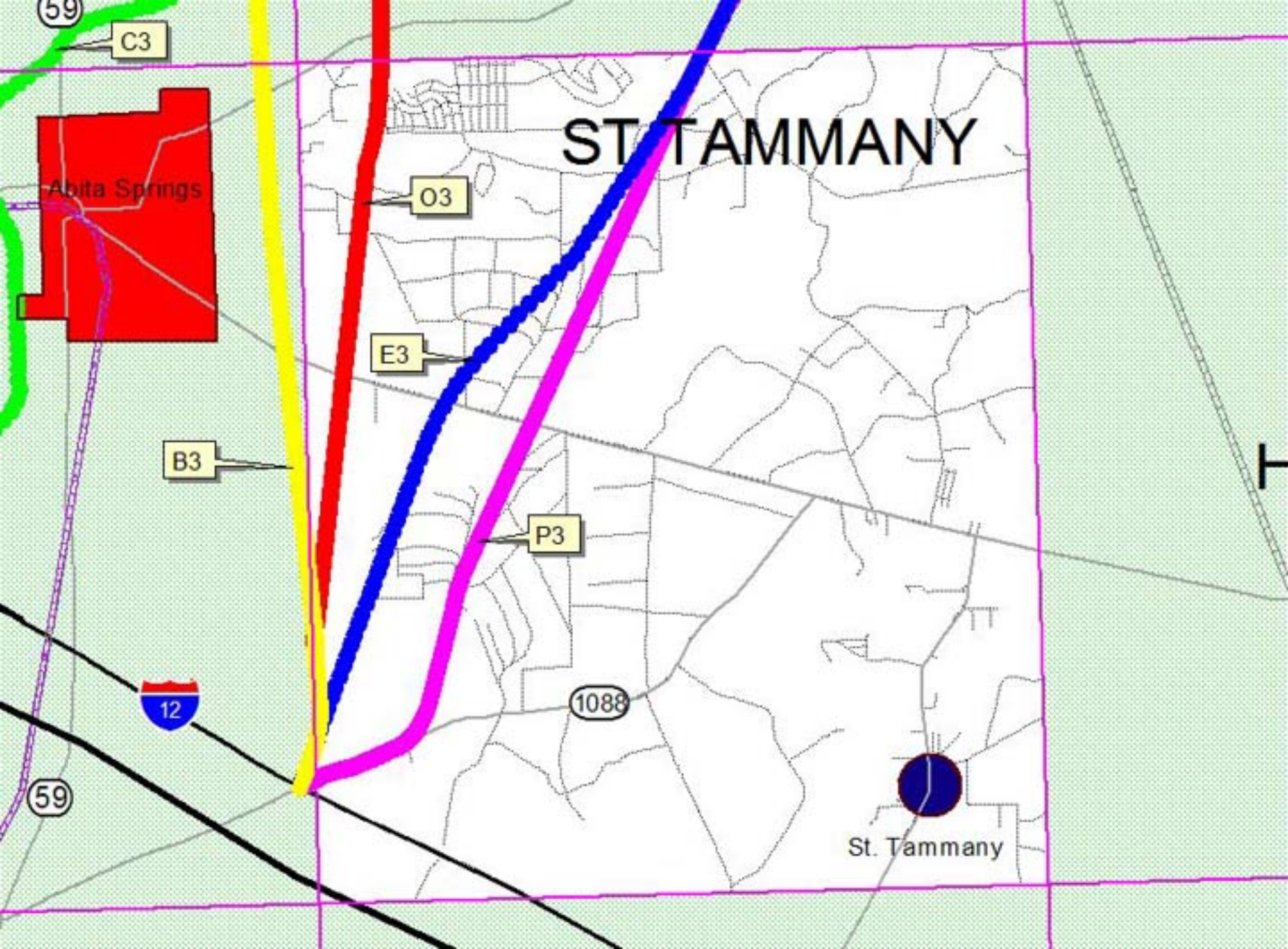
- Ed Wedge: (225) 379-1038 or edwedge@dotd.louisiana.gov
- Paul Waidhas: (504) 486-5901 or pwaidhas@bkusa.com
- Anna Coe: (504) 486-5901 or acoe@bkusa.com

OR

You may visit the project web-site: www.i12tobush.com

BURK-KLEINPETER INC., 2004

		A3 B3 C3	E3 M3 O3	P3 Local Streets
<p>I-12 to Bush Corridor Study State Project No. 700-52-0124 (TIMED)</p> <p><small>BURK-KLEINPETER INC. & BURK-KLEINPETER INC.</small></p>		<p align="center">Top 5 Optimized Alternatives And Upgrades To Existing Roadways</p>		



59

C3

Abita Springs

O3

E3

B3

P3

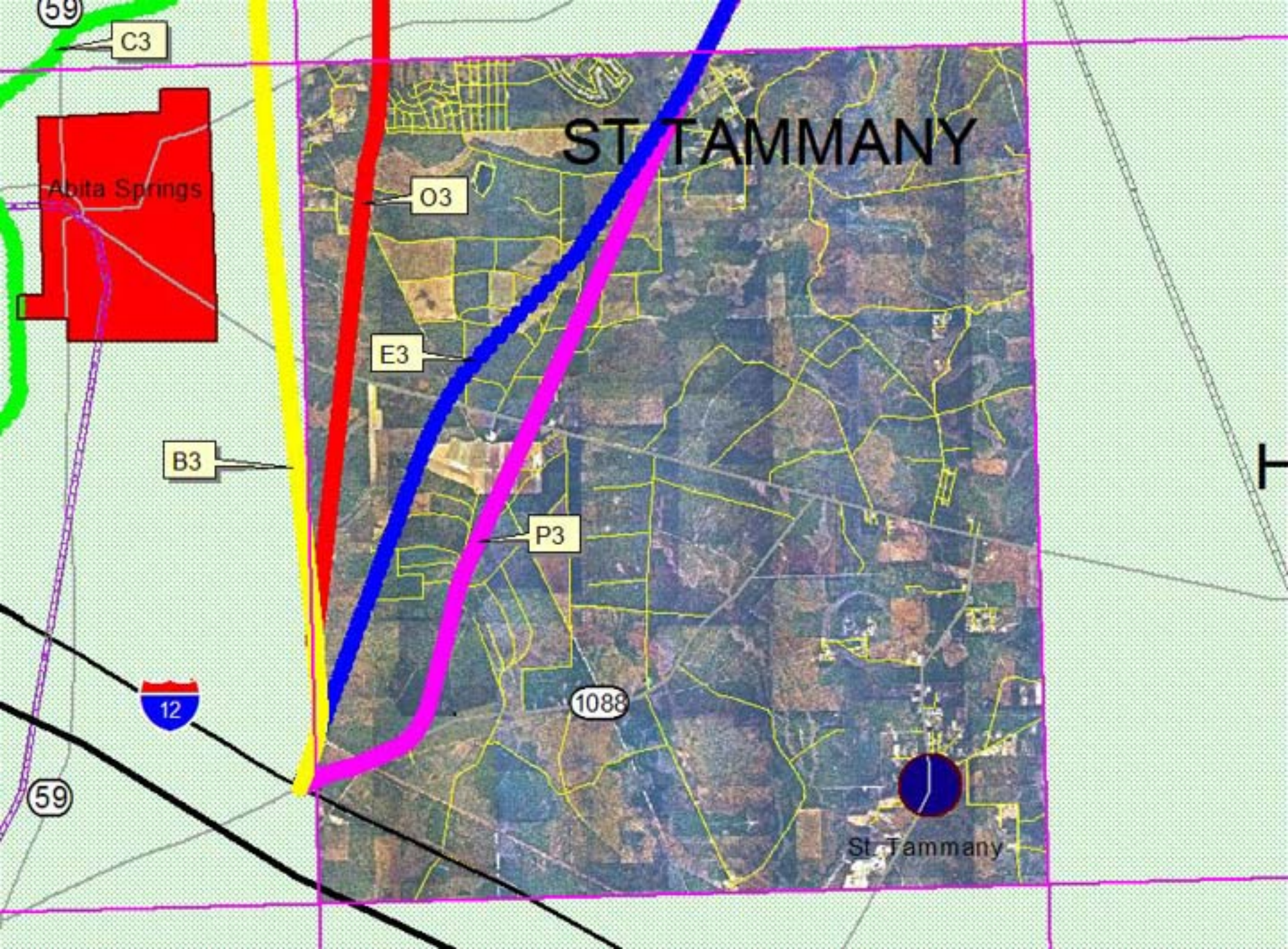
12

1088

59

St. Tammany

ST TAMMANY



59

C3

Abita Springs

ST TAMMANY

O3

E3

B3

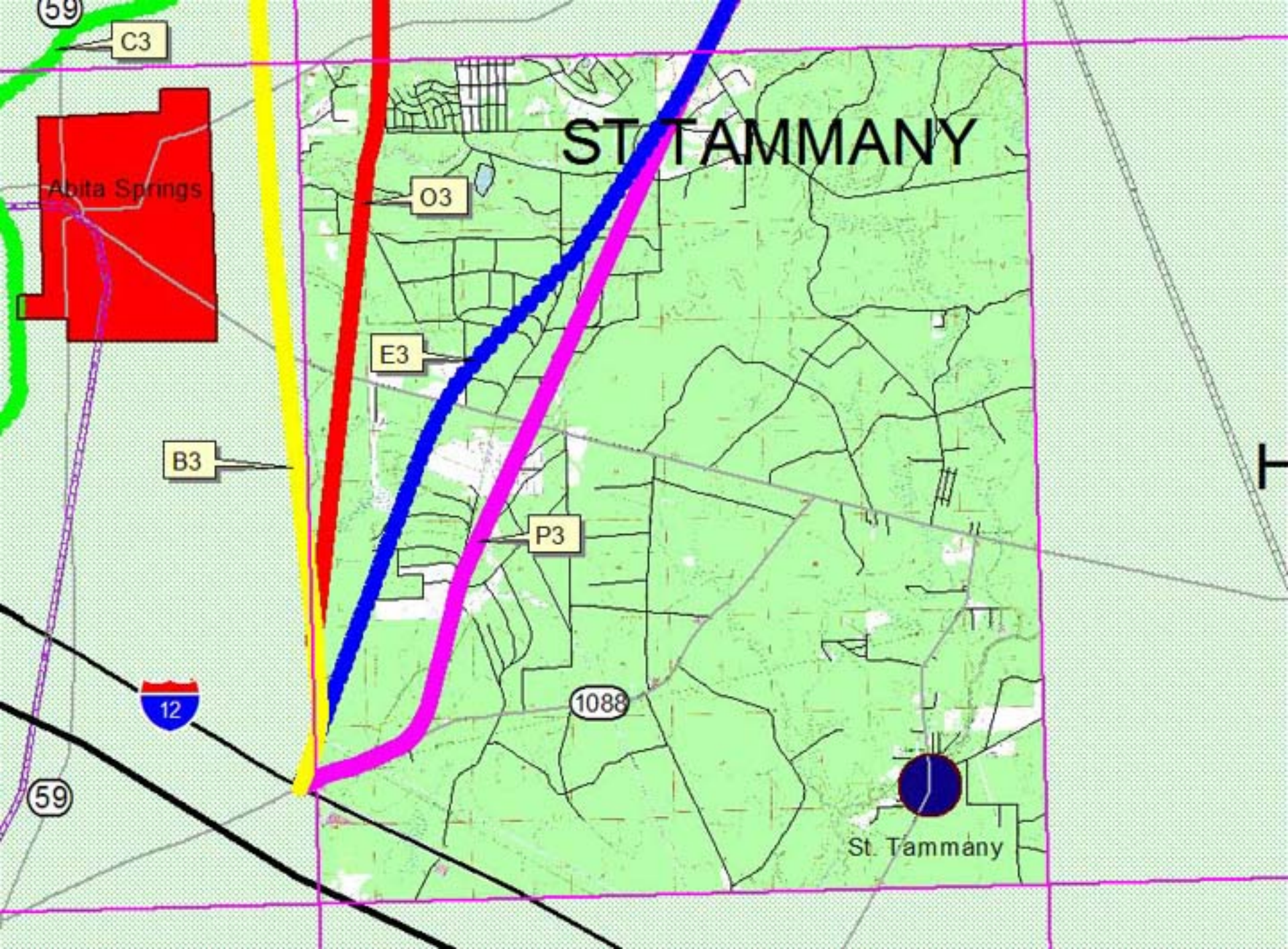
P3

12

1088

59

St. Tammany



59

C3

Abita Springs

ST TAMMANY

O3

E3

B3

P3

12

1088

59

St. Tammany