



**I-12 To Bush Corridor Study**  
**State Project No. 700-52-0124 (TIMED)**  
**AERIAL PHOTOGRAPHY WITH CONCEPTUAL**  
**ALTERNATIVES**



The following quad maps depict the top five alternatives, in addition to the widening of LA 21 and LA 41, on an aerial base photography:

**Waldheim**  
**Bush**  
**Industrial**  
**Covington**

**St. Tammany**  
**Hickory**  
**Slidell**

Please note:

- The top three alternatives recommended for further evaluation are Alternatives B3, O3 and P3. The Preferred Alternative will be determined during the environmental and conceptual engineering process under Phase III.
- These maps are at a scale of 1 inch = 2,000 feet.
- The line width depicting each alternative is approximately the width of the proposed right-of-way.
- These maps are a graphical representation of conceptual alignments. The maps and the referenced alternatives should NOT be used for any specific property transaction purposes.

Questions regarding these maps may be directed to:

- Ed Wedge: (225) 379-1038 or edwedge@dotd.louisiana.gov
- Paul Waidhas: (504) 486-5901 or pwaidhas@bkusa.com
- Anna Coe: (504) 486-5901 or acoe@bkusa.com

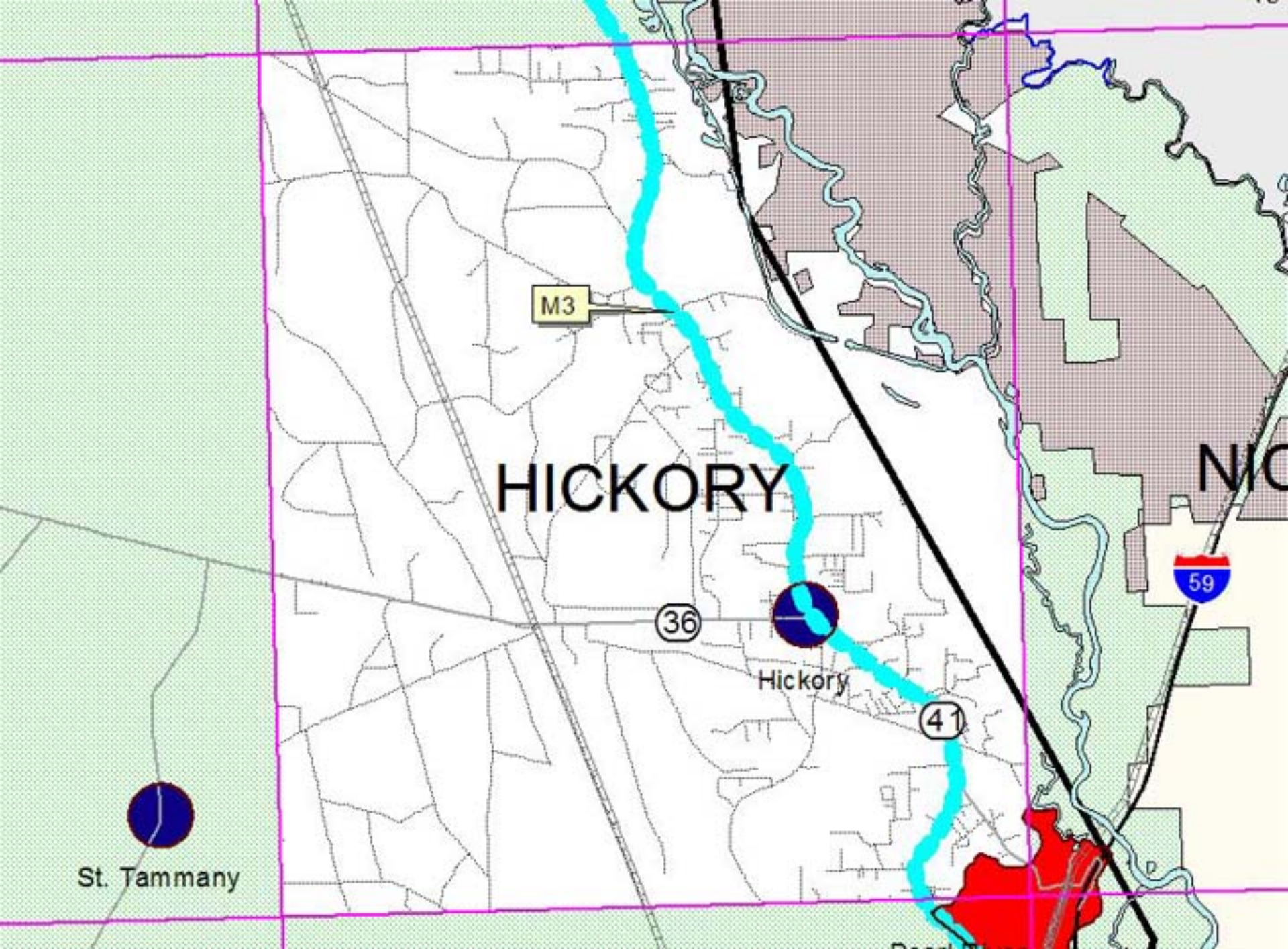
**OR**

You may visit the project web-site: [www.i12tobush.com](http://www.i12tobush.com)

BURK-KLEINPETER INC., 2004

<p><b>I-12 to Bush Corridor Study</b>  <b>State Project No. 700-52-0124 (TIMED)</b></p> <p><small>BURK-KLEINPETER INC. &amp; BURK-KLEINPETER INC.</small></p>		<p align="center"><b>Top 5 Optimized Alternatives And Upgrades To Existing Roadways</b></p>		

JULY 2004



M3

HICKORY

36

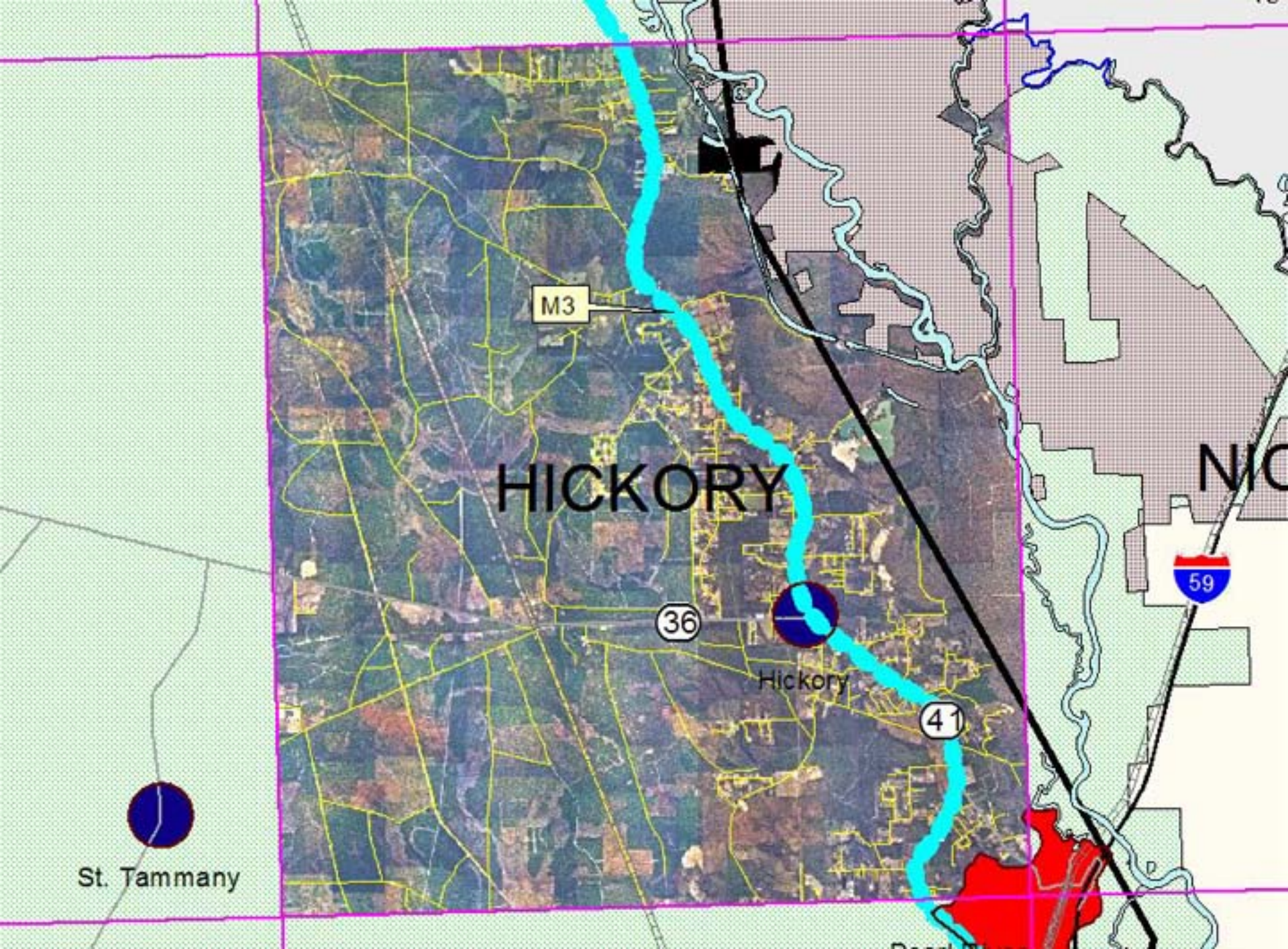
Hickory

41

59

St. Tammany

NIC



M3

HICKORY

36

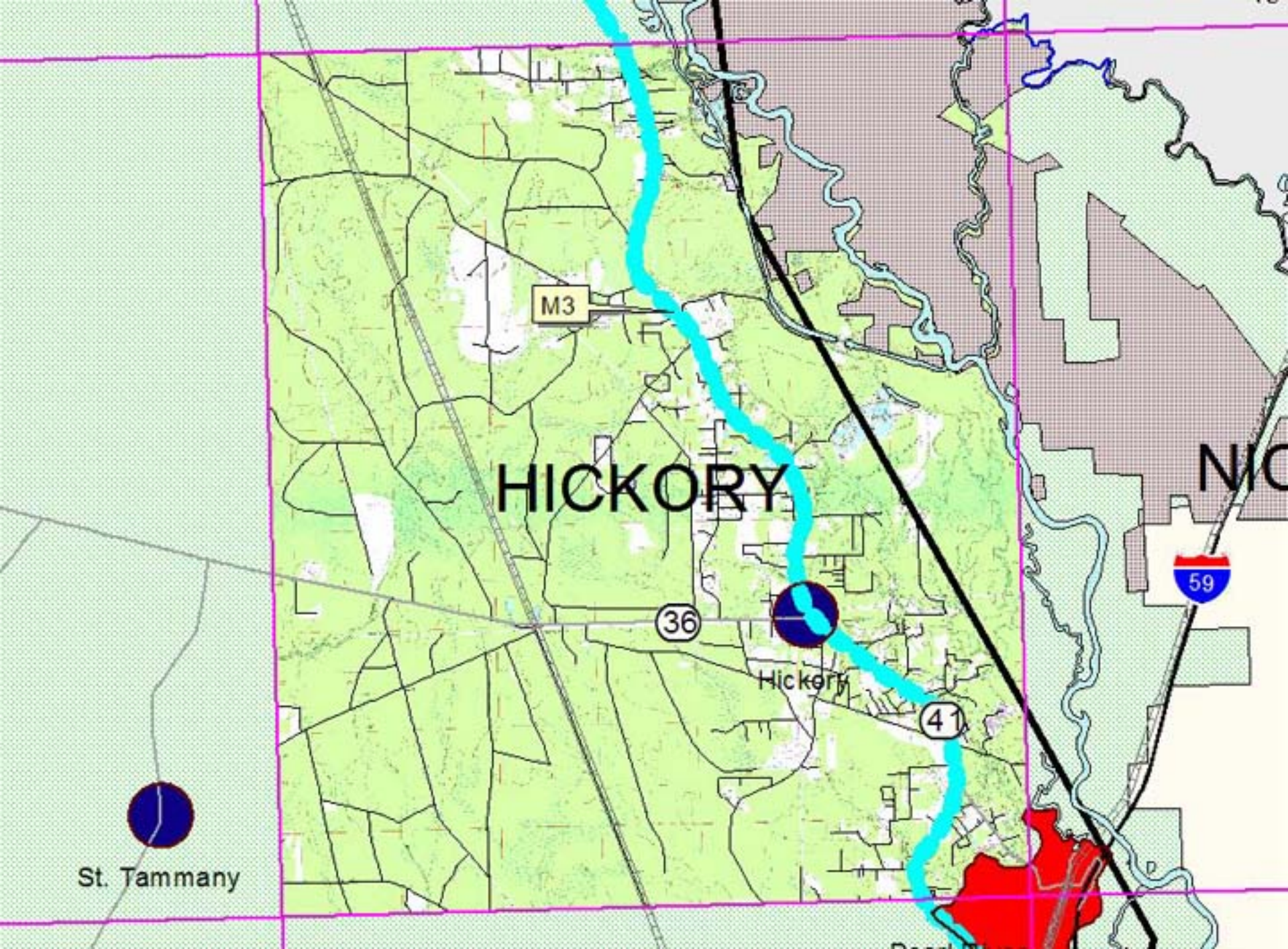
Hickory

41

59

NIC

St. Tammany



M3

HICKORY

36

Hickory

41

59

NIC

St. Tammany