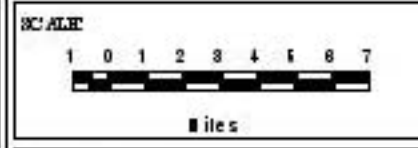
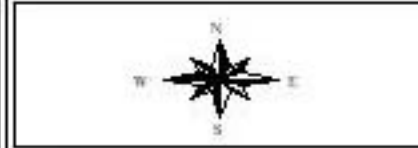


**LEGEND**

- Parish Boundary
- Project Area
- Incorporated Areas
- Unincorporated Places
- Hydrology
- Surrounding Areas
- Wildlife Refuge
- Wildlife Management Area
- Temporary Trace
- Railroads
- Interstate System
- US Highways
- State Highways

**Identified Alternatives:**

- A: The use of an existing right-of-way corridor.
- B: The use of an existing right-of-way corridor.
- C-1: The use of an existing right-of-way corridor.
- C-2: The use of an existing right-of-way corridor.
- D-1: The use of an existing right-of-way corridor.
- D-2: The use of an existing right-of-way corridor.
- D-3: The use of an existing right-of-way corridor.
- E: The use of an existing right-of-way corridor.
- F: The use of an existing right-of-way corridor.
- G-1: The use of an existing right-of-way corridor.
- G-2: The use of an existing right-of-way corridor.
- H: The use of an existing right-of-way corridor.
- I-1: The use of an existing right-of-way corridor.
- I-2: The use of an existing right-of-way corridor.



- BY VOUCHER: (2002)**
1. Louisiana State University
  2. Louisiana Dept. of Transportation Development
  3. St. Tammany Parish
  4. Louisiana Oil Spill Coordinator's Office



**I-12 to Bush Corridor Study**  
**State Project No. 700-52-0124 (TIMED)**

**EKI BURK-KLEINPIETER, INC.** & **DB SYSGRAPH INC.**  
*One of the Solutions... is always Simple*

AUG UST 2003

**Stakeholder and Public Identified  
 Conceptual Alternatives**